



NF FORWARD

RELAYS FOR EVERY PURPOSE

Sugar Cube Relays

Pcb Power Relays


Signal Relays

Automotive Relays

eMobility & New Energy

SUGAR CUBE RELAYS



Type of Relay	NF8	NF6, NF6T
		
Mounting height (mm)	15.3	15.3
Mounting space (mm)	19.5 x 15.6	19.5 x 15.6
Contact arrangement	1a, 1c	1a, 1c
Contact rating	10A 250VAC	12A 250VAC
Coil voltage	5, 6, 9, 12, 18, 24, 48	5, 6, 9, 12, 18, 24, 48
Coil power	360mW	360mW
T (ambient)	-40 to 105°C	-40 to 105°C
Approvals	UL, VDE, CQC	UL, VDE, CQC
IEC60335-1 Ed. 5	•	•
EN60079-15, clause 22. 4	•	•



NF7



21.0

21.3 x 16.2

1a, 1c

16A 250VAC

5, 6, 9, 12, 24, 48

360mW

-40 to 105°C

UL, VDE, CQC





NF7



21.0

21.3 x 16.2

1a, 1c

16A 250VAC

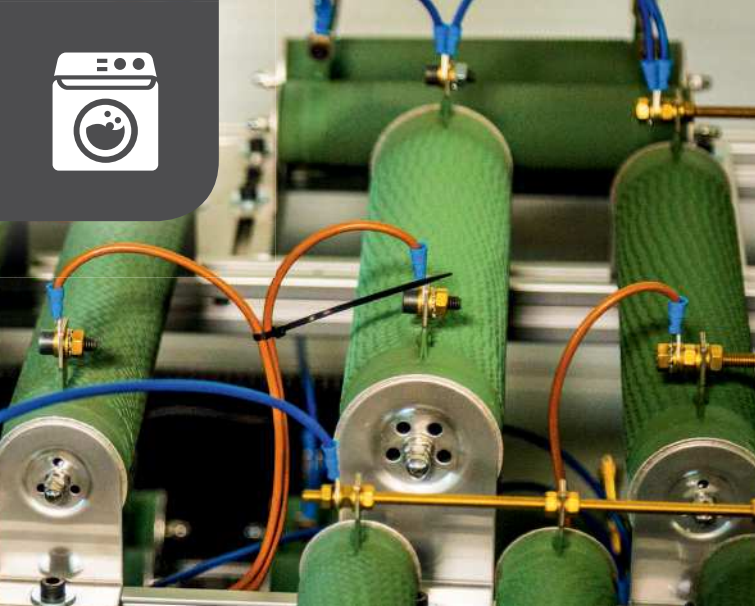
5, 6, 9, 12, 24, 48

360mW

-40 to 105°C

UL, VDE, CQC



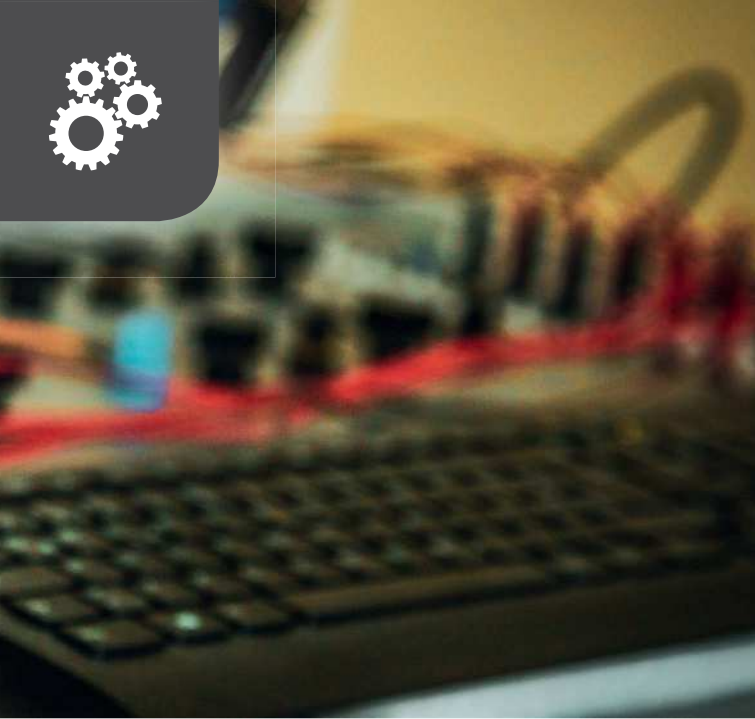


S7	NF75	NF90 (H, P)
		
12,5	15.7	20.5
28.5 x 10.1	29 x 12.7	32.5 x 27.6
1a, 1c	1a, 1c	1a, 1c
10A 250VAC, 30VDC	16A 250VAC	30/40/50A 250VAC
5, 6, 9, 12, 18, 24, 48	5, 12, 24 VDC	5, 6, 9, 12, 24, 48
220, 250mW	250, 410mW	900, 1500mW
-40 to 85°C	-40 to 105°C	-55 to 100°C
UL, VDE	UL, VDE, CQC	UL
•	•	
	•	

SIGNAL RELAYS





Type of Relay	ST1	ST2
		
Mounting height (mm)	10	12
Mounting space (mm)	12.5 x 7.5	20 x 9.8
Contact arrangement	1c	2c
Contact rating	0.5A 125VAC, 1A 24VDC	0.6A 125VAC, 2A 30VDC
Coil voltage	5, 6, 9, 12, 24	5, 6, 9, 12, 24, 48
Coil power	150mW	150, 200, 300mW
T (ambient)	-30 to 70°C	-40 to 90°C
Approvals	UL	UL





ST3 (mono-stable)	NF42
	
5	11.5
14 x 9	15.5 x 11
2c	1c
0.5A 125VAC, 2A 30VDC	3A 125VAC, 30VDC
5, 6, 9, 12, 24	5, 6, 9, 12, 18, 24
140, 200mW	200mW
-40 to 70°C	-25 to 70°C
UL	UL



AUTOMOTIVE RELAYS

Type of Relay	NF125 NG8N	NF108 NG8QN
		
Mounting height (mm)	13.8	14.4
Mounting space (mm)	14.3 x 7.5 (twin: 15.7)	16.1 x 12.5 (twin: 25.5)
Contact arrangement	1c (1c x2)	1c, 1u (1c x2)
Terminals	PCB	PCB
Contact rating	25A motor lock 14VDC	20A 14VDC
Coil voltage	12	12, 24
Coil power	640mW, 800mW	690mW
T(ambient)	-40 to 105°C	-40 to 105°C
Comment	wave and reflow (PIP)	

Type of Relay	NF115 NVC	NF117 NVFM
		
Mounting height (mm)	16.2	26
Mounting space (mm)	22.5 x 15.2	23 x 15.5
Contact arrangement	1a	1a, 1c
Terminals	plug-in	plug-in
Contact rating	25A 14VDC	30A / 35A 14VDC
Coil voltage	12	12, 24
Coil power	960mW, 1070mW	1200mW, 1500mW
T (ambient)	-40 to 100°C	-40 to 125°C



NF123H
NV23K

NF120
4120



9.9	22.3
12 x 12.9	16.8 x 21.5
1a, 1c (1a x 2, 1c x 2)	1a, 1c
PCB	PCB
NO: 30A 14VDC NC: 25A 14VDC	45A 14VDC
12, 24	12, 24
570mW	1300mW
-40 to 105°C	-40 to 125°C
	open and covered types



ISO Mini

ISO Maxi

Micro 280

NF104
NVF4-1/2

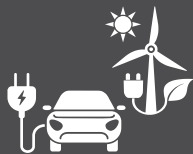
NF105H
NVF4-3/4

NF135
NVF28



24.5	26.5	25
26.5 x 26.5	29 x 29	22.5 x 15
1a, 1c	1a, 1c	1a, 1c
pcb, plug-in	pcb, plug-in	Micro ISO 280
40A / 50A 14VDC	80A 14VDC	NO:40A 14VDC NC:35A 14VDC
12, 24	12, 24	12, 24
1600mW	1800mW	1300mW
-40 to 125°C	-40 to 125°C	-40 to 125°C

E-MOBILITY & NEW ENERGY



Type of Relay	NF32	NF90-G
		
Mounting height (mm)	21.0	20.5
Mounting space (mm)	21.3 x 16.2	32.5 x 27.6
Contact arrangement	1a	1a, 1c
Contact rating	32A 250VAC	30A / 40A 250VAC
Coil voltage	9, 12, 24	5, 6, 9, 12, 24, 48
Coil power	2800mW	1500mW
T (ambient)	-40 to 85°C	-40 to 85°C
Approvals	UL	UL
Comment	>2.1mm contact gap	>2.1mm contact gap

ABOUT US

NF Forward manufactures and supplies a wide range of automotive, general purpose, power, signal and solid state relays, certified with approvals customary in the particular market. Whether standard off-the-shelf or customized to fulfill specific customer requirements, all relays are produced on certified, highly automated production lines at Ningbo Forward factories in China.

Headquarters and warehouse are located in Europe/Germany and covers the EMEA region whereas NF Forward USA in Florida covers the Americas with centralized warehousing in El Paso, Texas, and Sunrise, Florida. We also have an extensive distribution network within Europe, continental USA and China.

NF Forward is primarily focused on automotive, appliances and industrial markets.

Headquarters in Altendiez / GER





A close-up photograph of a mechanical assembly. The image shows a white plastic component with a blue circular part in the center. A thin metal wire is attached to the blue part. To the right, a white curved tube is visible. The background is a plain, light-colored surface.

European Headquarters

NF Forward GmbH
Im Petersfeld 5
D-65624 Altendiez
Phone: +49 6432 8006-0
info@nfforward.com

USA Headquarters

NF Forward USA Inc
4430 Orchid Blvd STE 202
Cape Coral, FL 33904
Phone: +01 954 3253547
sales@nfforward.com

www.nfforward.com